

UNIVERSITY ADMISSION REQUIREMENTS 2007 YEAR 12 - SCHOOL LEAVERS

SECONDARY GRADUATION

- Required by UWA

COMPETENCE IN ENGLISH

- English Course: Level 5 (ECU, Mur); scaled mark ≥ 50 (Cur, UWA) OR
- TEE English Literature: scaled mark ≥ 50 OR
- ESL if eligible
- Concession mechanisms

PREREQUISITES

- Where applicable
- Scaled mark ≥ 50
- Additional Requirements

TER (Tertiary Entrance Rank)

- TER derived from the TES
- TES based on a 4 or 5 subject average, multiplied by 5.1
- Must include at least one subject from List 1 and List 2
- Unacceptable subject combinations
- Final subject marks comprise 50% school assessment and 50% TEE results/external assessment
- Accumulation over -
2 years: UWA
3 years: Curtin, ECU, Murdoch

CALCULATING A TER

2007 YEAR 12 - SCHOOL LEAVERS

Subjects	List	Scaled marks	Grades
English CoS	1	70	
Economics	1	68	A
French	1	56	C
Calculus	2	62	B
Physics	2	61	B

1. Calculate Four Subject Average

Best List 1 = English (70)

Best List 2 = Calculus (62)

Next best 2 subjects: Economics (68) and Physics (61)

Average = 65.25

2. Is Five Subject Average better?

Subjects as in 4 subject average plus French (56)

Average = 63.4

3. Multiply better average by 5.1

TES = 332.8 (65.25 x 5.1)

4. ECU LOTE Bonus

Add 10% of French mark (=5.6)

Adjusted TES = 338.4

5. Use conversion table to derive TER from TES

Conversion table and calculator available at
www.tisc.edu.au

TER SUBJECTS 2007 YEAR 12

List 1

Humanities/Social Sciences

TEE subjects

Ancient History
Art
Chinese: Advanced
Chinese: Second Language
Drama Studies
Economics
English (not offered after 2006)
English Literature
French
Geography
German
History
Indonesian: Advanced
Indonesian: Second Language
Italian
Japanese: Advanced
Japanese: Second Language
Malay: Advanced
Modern Greek
Music
Political and Legal Studies

Courses of Study

English
Media Production and Analysis

List 2

Quantitative Sciences

TEE subjects

Accounting
Applicable Mathematics
Biology
Calculus
Chemistry
Discrete Mathematics
Geology
Human Biology
Information Systems
Physical Science
Physics

Courses of Study

Aviation
Engineering Studies

**UNACCEPTABLE
SUBJECT COMBINATIONS
2007 YEAR 12**



Both subjects may be taken (if available), but only one can count in the TER

Biology / Human Biology

Chemistry / Physical Science

Chinese:Advanced / Chinese:Second Language

Discrete Mathematics / Applicable Mathematics

Discrete Mathematics / Calculus

English (TEE) / English Literature

English (TEE) / English CoS

English Literature / English CoS

Indonesian: Advanced / Indonesian: Second Language

Indonesian: Advanced & Malay: Advanced

Japanese: Advanced & Japanese: Second Language

Malay: Advanced & Indonesian: Second Language

Physics/Physical Science

ADMISSION REQUIREMENTS 2008 YEAR 12 - SCHOOL LEAVERS (Aug 2006)

WACE

- Required by all universities

COMPETENCE IN ENGLISH

- English, EAL/D (if eligible), Literature: Level 5 (ECU, Mur); scaled mark ≥ 50 (Cur, UWA) OR
- Concession mechanisms

PREREQUISITES

- Where applicable
- TEE subjects: scaled mark ≥ 50
Courses: specified Level (ECU, Mur), scaled mark ≥ 50 (Cur, UWA)
- Additional requirements eg audition

TER (Tertiary Entrance Rank)

- TER derived from the TEA
- TEA sum of best 4 courses/subjects
- No List requirement
- Unacceptable combinations
- Final marks comprise 50% school assessment and 50% external assessment
- Moderation and scaling
- Accumulation over 5 years

Courses of Study/TEE subjects 2008

Courses (21)

Accounting and
Finance
Applied Information
Technology
Aviation
Biological Sciences
Chemistry
Computer Science
Drama
Earth & Environmental
Science
Engineering Studies
English
English as an Additional
Language/Dialect

Geography
History: Ancient and
Modern
Human Biological
Science
Literature
Media Production
and Analysis
Music
Physical Education
Studies
Physics
Politics and Law
Visual Arts

TEE (18)

Applicable Mathematics
Arabic
Calculus
Chinese: Advanced
Chinese: Second Language
Discrete Mathematics
Economics
French
German
Hebrew
Indonesian: Advanced

Indonesian: Second
Language
Italian
Japanese: Advanced
Japanese: Second
Language
Malay: Advanced
Modern Greek
Physical Science

2005 (2006 admission)	Number	% offered university place
Year 12 students	19 055	43
Year 12s with 4 or more TEE subjects	10 276	80
Year 12s who applied through TISC for a public university in WA	9 382	88
Year 12s offered a university place	8 243	

UNIVERSITY ADMISSION REQUIREMENTS

YEAR 12 – SCHOOL LEAVER

SECONDARY GRADUATION

UWA ONLY

- Curriculum Council
- 'C' average or better in 8 subjects, at least 4 at Year 12 level
- English Language competence : 'C' or better
- Completion of 10 subjects

COMPETENCE IN ENGLISH

- Scaled mark of 50 or more in TEE English or English Literature OR
- ESL if eligible
- ECU ONLY
TEE English or English Literature grade A, B or C
Senior English grade A
- Concession mechanisms

PREREQUISITES

- Where applicable
- Scaled score of 50 or more
- Additional Requirements

TER (Tertiary Entrance Rank)

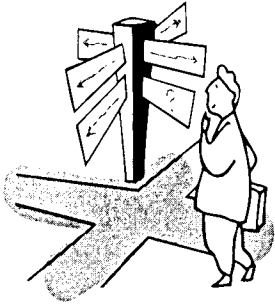
- TER derived from the TES
- TES based on a 4 or 5 subject average, multiplied by 5.1
- Must include at least one subject from List 1 and List 2
- Unacceptable subject combinations
- Final subject marks comprise 50% school assessment and 50% TEE results
- Accumulation over
- 2 years : UWA
- 3 years: Curtin, ECU, Murdoch

MINIMUM TERs 2006 ADMISSION

- | | |
|--|-------|
| ▪ CURTIN UNIVERSITY
OF TECHNOLOGY | 75.00 |
| ▪ EDITH COWAN
UNIVERSITY | 65.00 |
| ▪ MURDOCH UNIVERSITY | 62.00 |
| ▪ THE UNIVERSITY
OF WESTERN AUSTRALIA | 80.00 |

Average scaled marks	TER (approximate)
80	98.00
75	96.00
65	87.00
60	80.00
50	65.00

Summary TES to TER conversion table at www.tisc.edu.au



ALTERNATIVE ENTRY

Curtin University of Technology

- Some bridging/enabling programmes including
 - Agribusiness Enabling Course (Muresk)
 - Enabling Course in Engineering/Science/Computing
 - Aboriginal Bridging Course
 - Indigenous Tertiary Enabling Course

Edith Cowan University

- University Preparation Course
- Portfolio Pathway

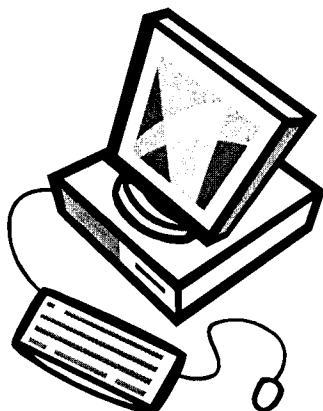
Murdoch University

- Access South West
 - TEE students from Rockingham area
 - Rockingham Campus
- TOP Tertiary Options Project
 - Disadvantaged TEE students

The University of Western Australia

- UWay
 - Disadvantaged TEE students

TISCOOnline



www.tisc.edu.au

What do you need to apply?

- Computer and printer
- Login between mid - August and 29 September

What does it cost

- \$20 up to 29 September
- \$99 after 29 September

What else can you do using TISCOOnline?

HEAPS!

- Search for courses
- Check your preferences
- Change your preferences
- Obtain TEE/Year 12 results on 27 December
- Obtain offer information on 17 January/5 February
- Change contact details
- Check general information about TISC services

TERTIARY INSTITUTIONS SERVICE CENTRE

(Incorporated in Western Australia)

100 Royal Street
East Perth, Western Australia 6004
Telephone (08) 9318 8000
Facsimile (08) 9225 7050
<http://www.tisc.edu.au/>

<Date>

School: <Code and Title>
<Title><Given Name><Surname>
<Address>
<Suburb><Post code>
Telephone: <number>

DON'T THROW THIS AWAY! YOU WILL NEED IT.

APPLYING TO UNIVERSITY VIA TISCOOnline (WEB)

- Logon at **www.tisc.edu.au**.
- You need a User ID and Password.
- Your User ID is your **2006 Curriculum Council Candidate Number: <number>**
- Work out your default **Password** from information on the login screen. (You'll have to change your default password the first time you login – but we tell you how to do this online.)
- If you're not sure about your User ID or Password, or your account has been locked, email **help@tisc.edu.au** (and, no, you won't be the only one!). If you've already entered a valid email address, you can use the Forgotten Password function on our website.
- Check out page 17 of the *2007 TISC Guide* for a step-by-step guide to the whole application process.
- Once you've applied, and depending on closing dates, you can change your **preferences** on the web (at no cost). When **TEE results** and **offers** are ready, you can find your own results and offer information on our website.
- **Application fees** are \$20 for 2006 WA TEE/Year 12 students, born on or after 1 March 1987, and \$40 for all other applicants. There are several ways of paying, including online with a credit card.
- If you apply after **29 September 2006**, you'll have to pay a **late fee** of \$99.
- **Please check that we have your personal details (above) correct.** If your name is wrong, please contact us. If your other details are inaccurate, please log on to our website to correct them, or email or telephone us. We need to be able to contact you at any time.

All the very best for your studies this year!

HIGHER EDUCATION CHANGES

COMMONWEALTH SUPPORTED PLACE (CSP)

- formerly HECS
- Australian government contribution plus 'student contribution'
- universities set student contribution amount, within government-set limits
- deferred payment option (HECS-HELP) only available to
 - Australian citizens
 - Permanent humanitarian visa holders

FULL FEE PAYING PLACE

- not available for all courses
- students pay full cost of tuition
- FEE-HELP loan scheme only available to
 - Australian citizens
 - Permanent humanitarian visa holders

ADVICE TO STUDENTS

- understand implications of a Full Fee preference
- if applying for a Full Fee place always put CSP higher than Full Fee for same course

MORE SCHOLARSHIPS

- Commonwealth Learning Scholarships
- University scholarships

MORE INFO

TISC Guide/uni websites/www.goingtouni.gov.au

APPLYING INTERSTATE

Interstate Guides

Reference copy in schools?

Newsagents

Apply on web (or phone NSW/ACT)

NSW & ACT	UAC
Queensland	QTAC
South Aust & CDU	SATAC
Victoria	VTAC
Tasmania	Uni of Tasmania

Closing date 29 September (same as TISC)

Fees

TER

WA TER = TER in NT/SA/Tas
 = UAI in NSW/ACT
 = ENTER in Vic

Conversion table for Qld OPs

Prerequisites

Subject equivalences

See www.vtac.edu.au/pdf/interstate_equiv.pdf

Cut-offs

Previous year's in Guides/web

2005 AUSTRALIAN YEAR 12 RESULTS CONVERSION TABLE

VIC ENTER NT/SA/WA/TAS TER ACT, NSW UAI	QLD OVERALL POSITION
99.95	1
99.50	1
99.00	1
98.50	2
98.00	2
97.50	2
97.00	3
96.50	3
96.00	3
95.50	4
95.00	4
94.00	4
93.00	5
92.00	5
91.00	6
90.00	6
89.00	7
88.00	7
87.00	7
86.00	8
85.00	8
84.00	9
83.00	9
82.00	9
81.00	10
80.00	10
75.00	12
70.00	14
65.00	16
60.00	17
55.00	19
50.00	21
45.00	22
40.00	24
35.00	25
30.00	25

INTERNATIONAL STUDENTS

TEE results available on TISCOOnline (web)
TISC posts hard copy for a fee

Apply direct to universities in WA, Victoria and Tasmania

Apply through admission centres in other states:

- Queensland Tertiary Admissions Centre (QTAC)
- Universities Admissions Centre (UAC) – NSW & ACT
- South Australian Tertiary Admissions Centre (SATAC)

WHAT ELSE?

No acknowledgement/change of preference cards for web applicants. Email sent if have email address

Eligibility ranks

Portfolio pathway ECU – application and portfolio submission through TISC

ECU UPC free for Australian citizens

CSP v DFee

Update on 2008 and 2009 admission (2007 and 2008 Year 12)

Arabic & Hebrew can count from 2007 Year 12

Competence in English

Prerequisites

COMPETENCE IN ENGLISH

English; English as an Additional Language/Dialect; Literature

- Scaled mark ≥ 50 - all universities OR
- At least level 5 in Course school assessment or examination assessment – ECU OR
- At least level 5 in Course school assessment and examination assessment - Murdoch

Concession

Murdoch will concede if student has sufficiently high TER, has sat the exam and has Course school assessment or examination assessment of at least level 5

Invitation to sit STAT/IELTS in January

- Sufficiently high TER
- Satisfied WACE (currently UWA only, all universities from 2008 Year 12)
- Not achieved competence in English as above

STAT Written English for Curtin, ECU, Mur
STAT Written English and Multiple Choice for UWA

Marks will not be considered unless student has been invited to sit via UAAL